



THE ANNIVERSARY ISLANDER



THE ANNIVERSARY ISLANDER

Model number: 35ANN16763IH18

3 beds • 2 baths • 1216 sq.ft. • 16' width • 76' depth

Our home building facilities invest in continuous product and process improvements. Plans, dimensions, features, materials, specifications and availability are subject to change without notice or obligation. Renderings and floor plans are representative likenesses of our homes and may differ from the actual homes. We invite you to tour a Home Center near you and inspect the highest value in quality housing available or call (918) 832-9888 to speak with a Home Consultant. Copyright 2017, CMH. All rights reserved.

<https://www.claytonhomestulsa.com>

CLAYTON HOMES-TULSA

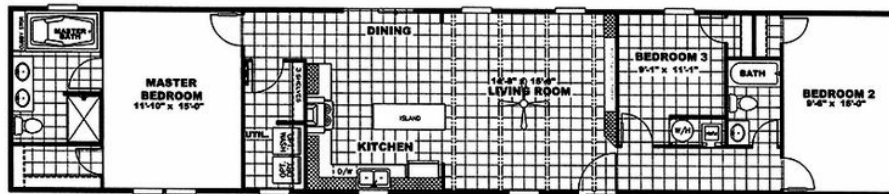
9445 EAST ADMIRAL PLACE
TULSA, OK 74115

Monday - Thursday: 9am - 7pm
Friday: 9am - 6pm
Saturday: 9am - 5pm
Sunday: Closed

(918) 832-9888



THE ANNIVERSARY ISLANDER



THE ANNIVERSARY ISLANDER

Model number: 35ANN16763IH18

3 beds • 2 baths • 1216 sq.ft. • 16' width • 76' depth

Our home building facilities invest in continuous product and process improvements. Plans, dimensions, features, materials, specifications and availability are subject to change without notice or obligation. Renderings and floor plans are representative likenesses of our homes and may differ from the actual homes. We invite you to tour a Home Center near you and inspect the highest value in quality housing available or call (918) 832-9888 to speak with a Home Consultant. Copyright 2017, CMH. All rights reserved.

<https://www.claytonhomestulsa.com>

CLAYTON HOMES-TULSA

9445 EAST ADMIRAL PLACE
TULSA, OK 74115

Monday - Thursday: 9am - 7pm
Friday: 9am - 6pm
Saturday: 9am - 5pm
Sunday: Closed

(918) 832-9888